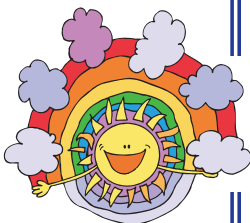


A Letter from the Directors

What a wonderful few weeks we have had together here in the Berkshires! The weather has cooperated with us, Leagues is off to an incredible start, and we are grateful for our close knit camp family.



The girls have jumped right into life here at Danbee! We are proud to see campers challenging themselves at the ropes course, participating in a Community Service project, taking in the beauty of a Berkshires sunset out at Jocobe, or learning something new on the tennis courts. And perhaps even more than that, we love to see the friendships that are developing and strengthening. It's incredible to see the way the girls care for and encourage each other. There really is something unique about camp friends.

It is hard to believe that in less than a week we will be welcoming you to our summer home. We simply can't wait. This newsletter gives you additional information on Visiting Day. Please take the time to review it and contact us with any questions.

See you here at camp on Sunday, July 14th! Pack your dancing shoes.

Jay, Mack, Jackie, Lauren & Courtney

INSIDE THIS ISSUE...

Parent Visiting Day Schedule and Procedures.....	2-4
Reminder: No Non-Essential Packages	5
Camper Mail	5
Important Dates	5
Driving Directions	6

DANBEE TEACHES 21st CENTURY SKILLS

There are so many teachable moments at camp. At Danbee we help girl's to become their "Best-Selves".

Girls practice authentic communication and learn the art of compromise as they navigate camp everyday.



Whether they are trying to master skills on the ball fields, the lake, the art room or in newspaper our girls stretch themselves. Our girls come back home with improved skills that will last a lifetime.

The other great aspect of daily Danbee is our commitment to Community Service. Our campers have the opportunity every day to participate in some service oriented project. Our Swim-A-Thon will help us raise the funds to send a hundred kids to camp next summer. The girls enjoy "giving back" and they know that their efforts do – Make a Difference!!!

The intentionality of our community inspires girls and young women to become comfortable with who they are and to develop high expectations of whom they will become.

We love our girls and they know it. We can't wait to share our passion with you and allow you to see first-hand how great it is to BE A DANBEE GIRL!!!

Peanut & Tree Nut Allergies

We have many campers that have peanut and tree nut allergies, some quite severe. For the health and safety of all, please refrain from bringing products containing these ingredients to camp.

Thank you for your cooperation.



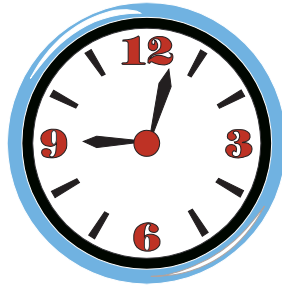
Parent Visiting Day: Sunday, July 14

TRAVEL TO CAMP

Driving directions to camp can be found on the last page of this bulletin. A friendly reminder that the local police strictly enforce speed limits.

ARRIVAL AT CAMP

Parent Visiting Day begins at 9:00 am. You can arrive at camp after 8:30, but you will not be able to see your daughter until 9:00. From 8:30 to 9:00 we will have coffee and bagels available while you wait. As you arrive at camp (after 8:30 am) parking attendants will direct you to a parking space along the camp road.



SCHEDULE OF ACTIVITIES

A schedule of Sunday activities is provided on the next page.

From 9:00 am – 9:30 am, you can visit with your daughter in her cabin.

We also encourage you to speak with her counselors, get to know them and ask them

about your daughter. At 9:30 am, Campus girls (2nd to 6th grade) and Acres girls (7th – 9th grade) will assemble on their respective campuses for general announcements about the morning schedule.



Continued on next page

Schedules for the day and maps of camp will be distributed as you arrive. If you arrive after 9:00 am, first park your vehicle then go directly to your daughter's bunk, where she will be waiting. Any staff member can direct you to your child's cabin. The morning's activities will begin with an assembly at 9:30 am.

SEE DANBEE IN ACTION ON VISITING DAY!

Join the fun and catch the Danbee spirit with us on visiting day! You'll hear the music our campers love, you'll see your daughters dance to their favorite songs, and see lots of happy, smiling faces all day long. We can't wait for you to see Danbee in action on Sunday, July 14th!

Reminder:

DRESS CASUALLY ON VISITING DAY!

Parents should dress in casual clothing that is appropriate for camp activities. Feel free to bring bathing suits and remember to apply sunscreen!



SCHEDULE FOR PARENT VISITING DAY SUNDAY, JULY 14th

9:00 - 9:30 am	Parents check-in at camper's bunk. Meet counselors and get name tags at daughter's bunk!
9:30 am	Assembly – Campus (entering grades 2-6) at Campus basketball court Assembly – Acres (entering grades 7-9) at Acres
9:45 - 10:25 am	1st Activity Period
10:40 - 11:20 am	2nd Activity Period
11:35 - 12:15 pm	4th Activity Period
12:15 - 1:30 pm	Lunch (All Camp Gathering) See our Spirit in Action!
1:30 - 3:10 pm	Rest Hour and Areas Open for Fun. (Pools, Slide, Tennis, Soccer, Gymnastics and More!!!)
3:10 - 3:30 pm	Return to Bunks to say Goodbye
3:30 pm	Parents Depart
3:45 pm	The largest shaving cream fight in the history of Summer Camping.

Continued from previous page

SUNDAY SCHEDULE AND ACTIVITIES

We will be running three, 40-minute activity periods. Parents should accompany their daughters to their classes, which will begin promptly at 9:45 am. Campers must attend assigned activities. There will be time between activities for you to visit with your children. No one may leave camp during our Visiting Day.

SUNDAY LUNCH

All campers and their parents will enjoy lunch together on Sunday up at our soccer field. We will provide many different options and will sit together picnic style – you may want to bring a blanket to sit on. Sunday lunch provides an excellent opportunity to visit with your daughter's cabin counselors and favorite specialists, all of whom will be at lunch and delighted to speak with you.

SUNDAY DEPARTURE

Visiting Day will end at 3:30 pm on Sunday. Please depart promptly at that time. Children often cry when their parents leave. Help your child by making your goodbye short. Campers may cry, but they are happy shortly thereafter as they participate in shaving cream fights and special events. We get back to "normal" very quickly once parents are out of sight.



WE WANT... TO SPEAK WITH YOU!

Please be sure to speak with one of the Directors or Head Staff sometime during the day so that we can discuss your daughter's experience at Danbee. We welcome your input and suggestions.

Visiting Day Rules And Policies

Please follow these important policies on visiting day. Thank you in advance for your cooperation in following the rules and guidelines that we have established for parent visiting day. Remember—we have set up these rules to benefit your children and to ensure that everyone has the best possible visiting day experience.

NO EXCESSIVE FOOD

Parents who bring excessive amounts of food on visiting day create a significant problem for camp. Food in the cabin draws insects, interferes with mealtime appetites and creates unnecessary friction between bunk mates. Food will be discarded after visiting day. Parents who bring excessive amounts of food and candy violate our trust, disrespect the overwhelming majority of parents who follow the rules and force our cabin and senior staff to play the role of policemen thereby infringing on the relationships they have worked hard to establish with their campers. We have many campers that have nut and tree allergies, some quite severe. For the health and safety of all, please refrain from bring products containing these ingredients to camp. Thank you for your cooperation.



NO BUNK GIFTS

Once again, we will be enforcing a **“NO BUNK GIFT”** policy. This policy is most applicable on Parent Visiting Day. A bunk gift is any item of candy, food, clothing, jewelry or any other trinket or item that is intended for any other camper in the cabin. You may bring essential items to your daughter such as clothing or athletic equipment, but you may not bring gifts for campers other than your own daughter. Bunk gifts foster subtle, yet unhealthy competition among campers and parents. We certainly understand and appreciate the good intentions behind bunk gifts; however, ultimately they compromise the values we are trying to impart.

We need your help and cooperation.

Please do not bring bunk gifts on visiting day or send them to your daughter.



NO ELECTRIC FANS AND GRAFFITI

We would like to clarify our policies regarding electric fans and graffiti at camp. As stated under “Danbee Rules and Policies” in our Family Handbook, electric fans are not allowed at camp. We are also trying to crack down on the graffiti around camp. Any camper who writes graffiti or otherwise defaces the camp will be required to sand off or paint over the damage. As always, we appreciate your support!

NO PETS

Animals and pets of any kind are not permitted in camp. **There are NO exceptions to this rule.**



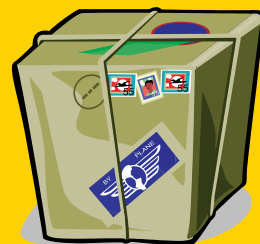
NO TIPPING

Camp policy forbids gratuities to staff members. Each staff member has signed a contract, which obligates her to refuse gratuities. A counselor who accepts a gratuity is subject to immediate dismissal.

IMPORTANT REMINDER!! With the exception of WBY, all campers and their families must remain in camp for the full Visiting Day on Sunday, July 14th. We have an exciting, fun day of activities planned and look forward to sharing the Danbee experience with all of you.

REMINDER: NO NON-ESSENTIAL PACKAGES

Our package policy is simple. We allow mail to be sent in Priority Mail or FedEx sized envelopes. We allow parents to send essential items such as new sneakers, socks, swim goggles or a tennis racquet. Packages containing essential items must clearly and conspicuously identify the enclosed items. We do not allow packages that contain candy, food, gifts or any other non-essential items. Permitting such items not only makes it harder to keep our cabins and camp clean, it also fosters unwelcome competition among our campers and teaches them that it's OK, and even fun, to break the rules. As usual, we will return or discard **EVERY** unapproved package. Of course, no matter how hard we try, we can't do this alone. We need your help. **Please do not send non-essential items to camp**; please advise friends and relatives to do the same, and **please let campers know that you will not be sending them these items**. Thank you for your cooperation.



IMPORTANT DATES *Summer 2020*

Camp Dates for 2020:
Friday, June 26 – Friday, August 14

Parent Visiting Day:
July 19, 2020

Camper Mail

Since our local post office is small and ill equipped to handle the volume of mail we send and receive, all of our mail is routed through Springfield, Massachusetts. We require campers to write home three times per week so campers' mail may arrive at home sporadically or in bunches.



It is important that campers receive frequent mail from home throughout the summer. This is especially vital in helping new campers adjust to camp. Write positively about their camp experiences. The tone of parents' mail can help or hurt your daughter's experience. Letters that remind campers of their home ties, for example, by mentioning pets or family activities at home, should be avoided.





Driving Directions to Camp Danbee

To set your GPS for Camp Danbee key in 94 West Main Road, Peru, MA 01235

From New Jersey and South

Garden State Parkway North to the end. Bear left and take Route 87N towards Albany (DO NOT follow signs for New England Thruway). New York State Thruway North to Exit 21A. Route 90E to exit B3 (about 20 minutes, first exit after toll) Turn left onto Route 22N (3 miles) to Route 295E.

*** Proceed on 295E to a "T" intersection (2.5 miles.) At "T" intersection, turn left onto Route 41N. Stay on Route 41N until another "T" intersection (3.5 miles). Turn right onto Route 20E (4.2 miles). Turn left onto Route 7N. Stay to the right at the monument and continue on East Street. Follow signs for Route 8. Go to the intersection for Route 8 South, turn right. Stay on Route 8 until you reach Hinsdale center. Turn left onto Route 143. Danbee's entrance is approximately 2.5 on the right.**

OR New York State Thruway North to Exit 17 (Newburgh.) Take Route 84E to Taconic State Parkway North. Exit at Route 295E (about 10 minutes). **Follow directions above.***

From New York City

The Major Deegan Expressway North becomes the New York State Thruway North to Exit 21A. Route 90E to Exit B3 (first exit after toll.) Turn left onto Route 22N to Route 295E.

Follow directions above.*

From Long Island

Whitestone Bridge to Hutchinson River Parkway North to Route 287W. Take Sprain Brook Parkway North, which becomes Taconic State Parkway North. Exit at Route 295E.

Follow directions above.*

OR Hutchinson River Parkway North to 684N to the end. Follow signs for Route 22N. Follow to Route 295E.

Follow directions above.*

From Westchester

West Side: Taconic State Parkway North. Exit at Route 295E. **Follow directions above.***

East Side: Take Route 684N to the end. Follow signs for Route 22N. Follow to Route 295E. **Follow directions above.***

Alternate Route From New York Thruway

(This route takes a little longer but requires far fewer turns!)

New York Thruway North to the Mass Pike East (90E.) Take Exit 2 (Lee) and turn left onto Route 20E. Follow Route 20E to Route 8N. Follow Route 8N to Route 143E. Danbee's entrance is 2.5 miles on the right.

From Boston and East

Mass Pike West (90W) to Exit 3 (Westfield). Follow signs to Route 20W. Stay on Route 20W to the town of Huntington (approximately 15 miles). In Huntington turn right onto Route 112. Keep going straight when Route 112 turns right. You are now on Route 143. At the fork, bear left onto Route 143W. Proceed approximately 8 miles to camp entrance on the left.

